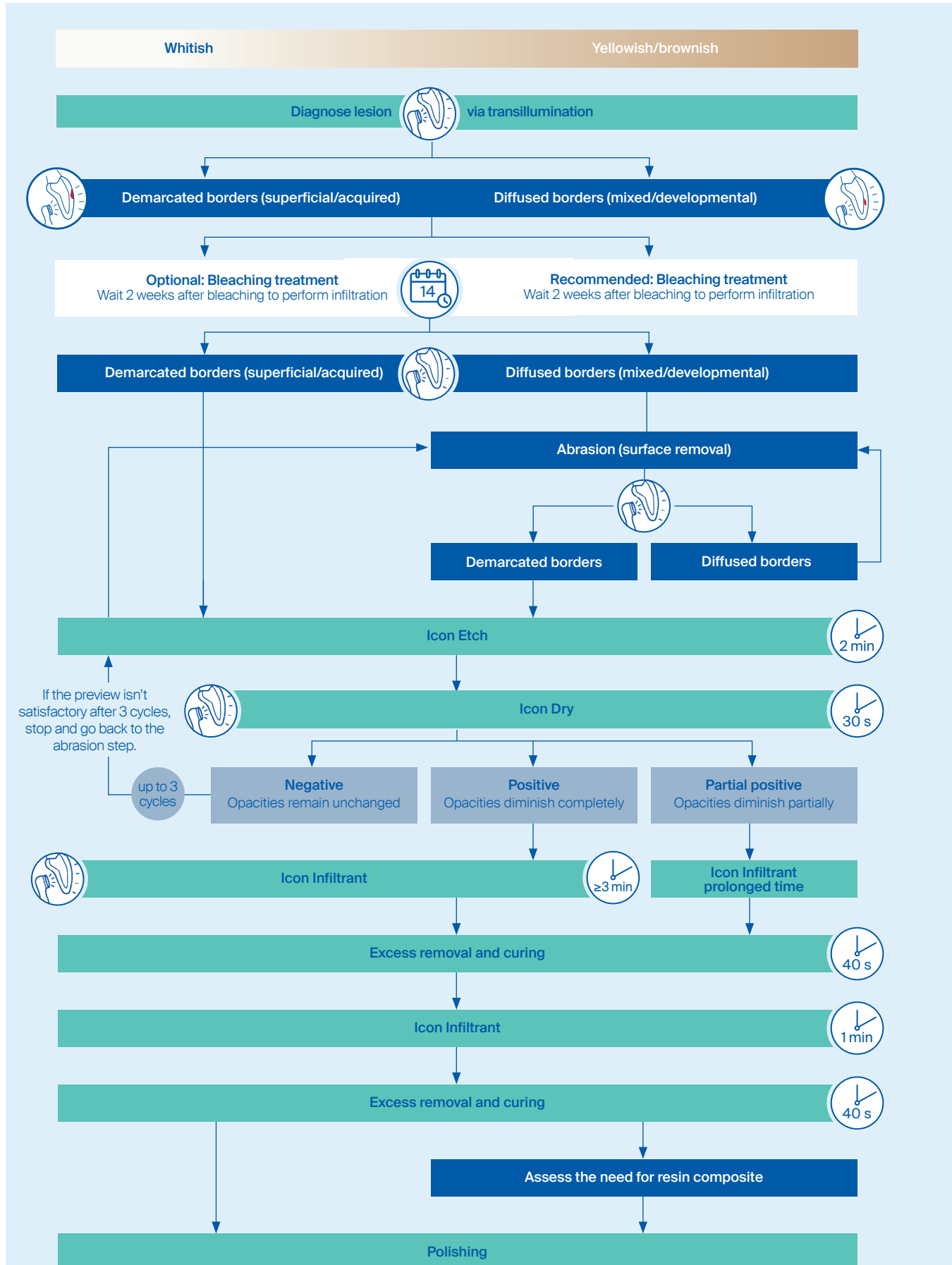
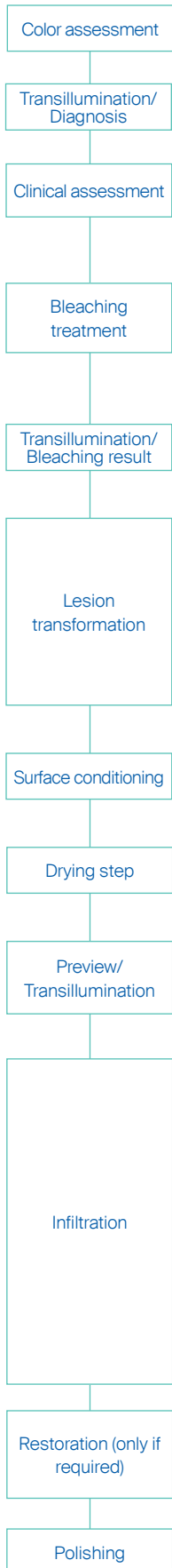


Icon Smooth Surface Infiltration concept:
A guide to help diagnose and plan for resin infiltration treatment



How to diagnose and plan for treatment

Transillumination



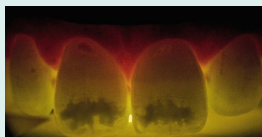
Transillumination with light.

Position the light device behind the tooth to illuminate it.

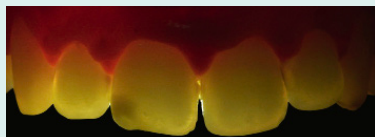
Transillumination to support diagnosis:

The borders of the lesion under transillumination provide information about the lesion within the enamel.

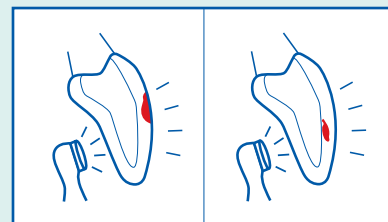
- ↳ Demarcated borders = superficial/acquired lesion = lesions are located close to the surface.
- ↳ Diffused borders = mixed/deep lesions = lesions are located away from the surface.



Demarcated borders



Diffused borders © Dr Omar Marouane, Tunisia



Acquired/superficial (surface) lesion w/ demarcated borders

Mixed/deep lesion w/ diffused borders

Transillumination during Icon Dry application:

Transillumination during ethanol application can provide even more information about the accessibility of the lesion following the Icon Etch step

Transillumination during Icon Infiltrant application: Transilluminating shortly within the infiltration can provide a better understanding of the infiltration progress.

- ! Please ensure that you do not use a light curing lamp for transillumination during infiltration.

Bleaching

Bleaching is an optional step prior to infiltration treatment that can enhance the overall esthetic result of enamel white spot lesions and enamel opacities.

Good reasons to opt for bleaching prior to infiltration treatment:

- ↳ Reduces differences in color between healthy and affected enamel
- ↳ Better results after infiltration when using combination of infiltration and bleaching 6
- ↳ Mitigates patient dissatisfaction due to darker appearance of the teeth after treatment
- ↳ In the case of yellowish or brownish discoloration, a bleaching treatment is strongly recommended prior to infiltration to improve the overall result

Preview with Icon Dry

In addition to the priming property, Icon Dry can also provide information about the access to the lesion and can therefore give a preview of the treatment result.

- ↳ **Positive preview:** The whitish appearance of the lesion disappears in the first seconds after wetting.
- ↳ **Partially positive preview:** The whitish appearance just partially disappears. The appearance of the lesion changes, but not completely.
- ↳ **Negative preview:** No color change can be observed during Icon Dry application.

This guide is intended to support resin infiltration treatment with Icon and is not intended to replace the instructions for use (IFU). Always consult the full manufacturer IFU and consult your DMG Dental Representative if you have questions, concerns or would like to schedule a Lunch and Learn, demo or training appointment.

Visit us to learn more at dmg-america.com/icon

